

# The Art Yard

gallery & studios

## Hanging Space Costs

### TERMS & CONDITIONS:

All works should be submitted 'Ready To Hang' and have either a cord or hanging brackets attached. **No Eyelets, No Nails & No Protrusions**

Unsold work remains the property of the user who should ensure it is covered by their own insurance

The user agrees that The Art Yard (MFAA) may copy and publish images of the art/craft in publications and on social media in perpetuity All other rights are reserved with the rights holder/s.

The Art Yard Team reserve the right to refuse to exhibit submissions for whatever reason

\* For full terms and conditions visit our website: [www.mfaa.co.uk](http://www.mfaa.co.uk)

# Hanging Fees



< 50cm

1	2	3	4	5
---	---	---	---	---

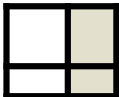
## Standard Size

Up to <50cm in either direction = **£5**

Submit x4 standard pieces @ £5 = £20

& get x1 extra piece **FREE**

(Save £5)



Over >50cm in either direction

& up to < 75cm = **£7.50** each

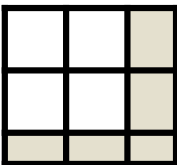
(Save up to £3.50)



Over >75cm in either direction

& up to >1m = **£10**

(Save up to £10)

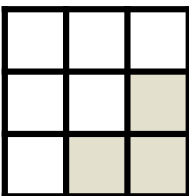


Over >1m in either direction

& up to <1.25m = **£20**

(Save up to £11.25)

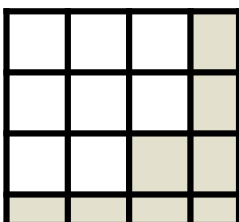
**Only 2 large works over >1.25m per artist [except whole wall/gallery hire]**



Over >1.25m in either direction

& up to <1.5m = **£30**

(Save up to £15)

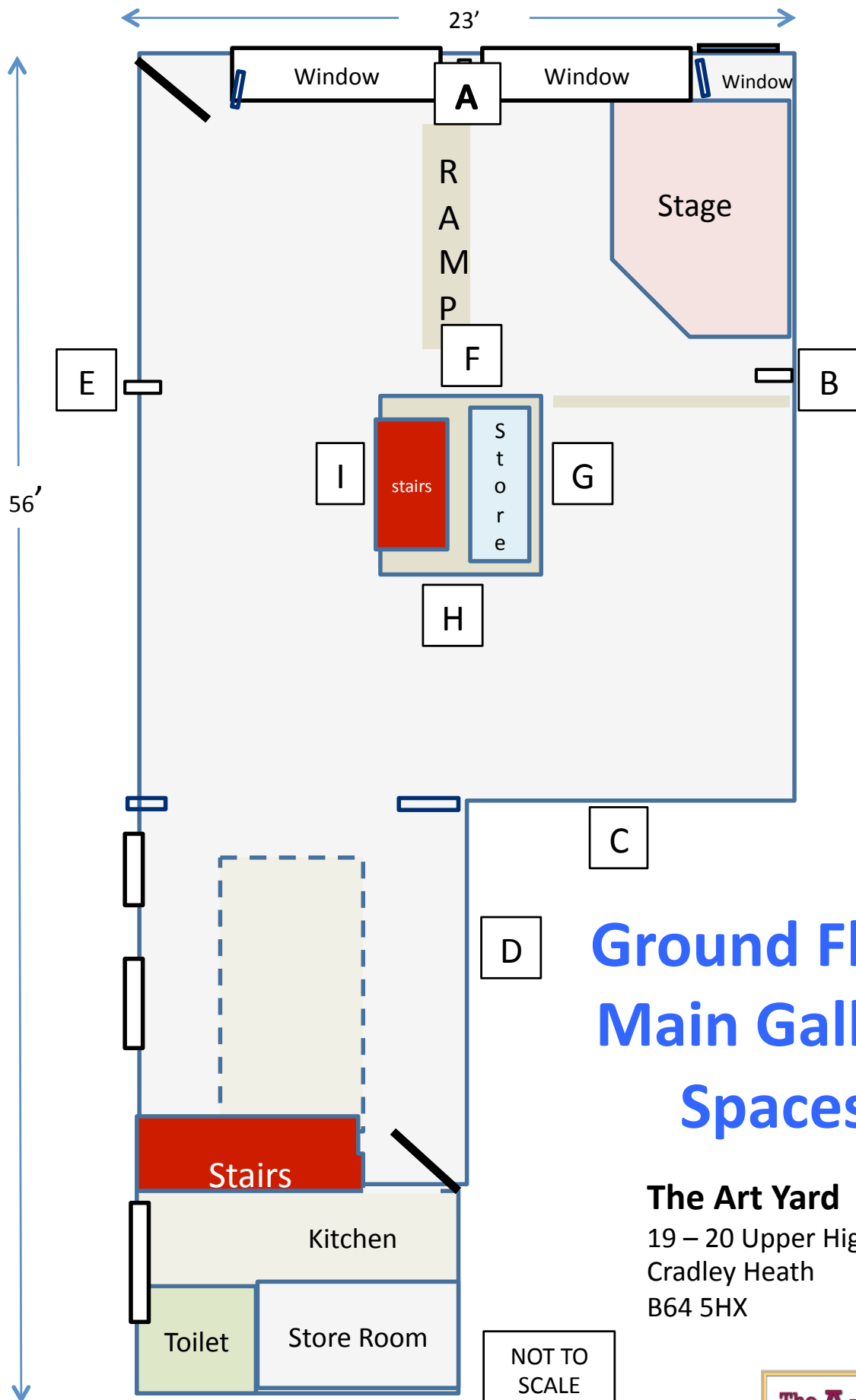


Over >1.5m in either direction

& up to >1.75cm = **£40**

(Save up to £21.25)

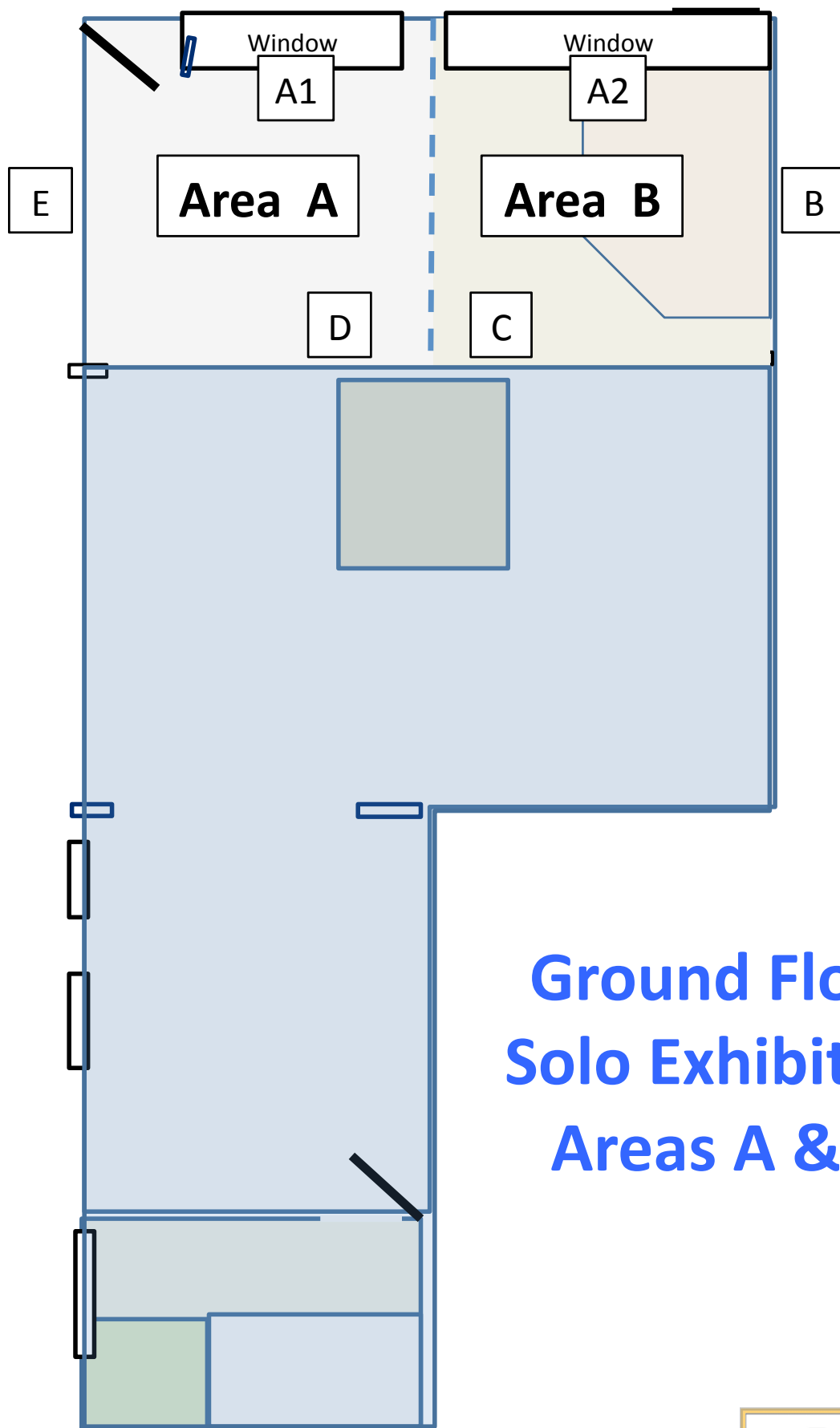
- Hanging fees apply to exhibitions usually lasting up to 4 weeks
- Student discounts of 20% available for card holders under >20yrs
- Gallery commission of **15%** is charged on all sales
- Pieces over >2m in either direction and craft are individually cost.

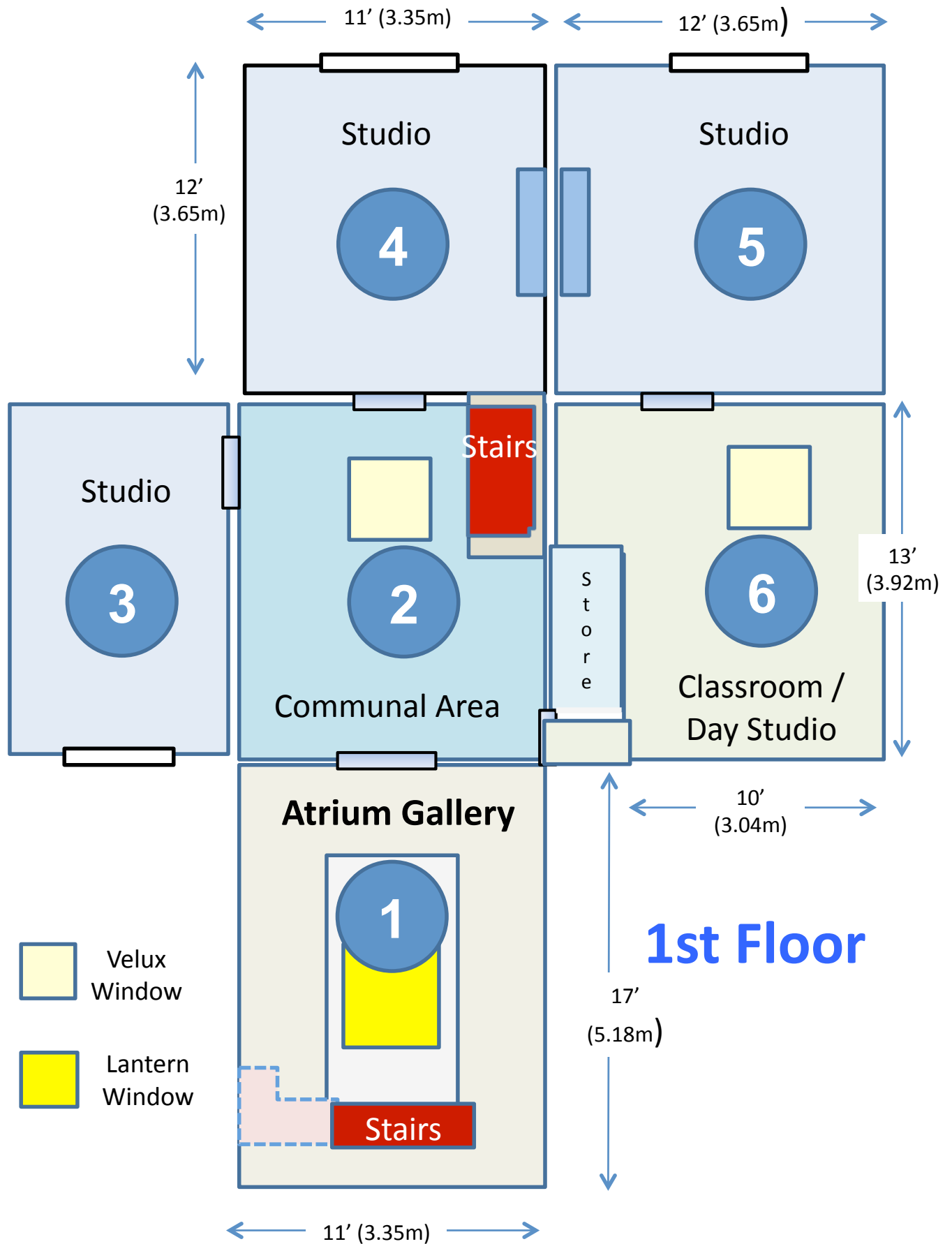


## Ground Floor Main Gallery Spaces

### The Art Yard

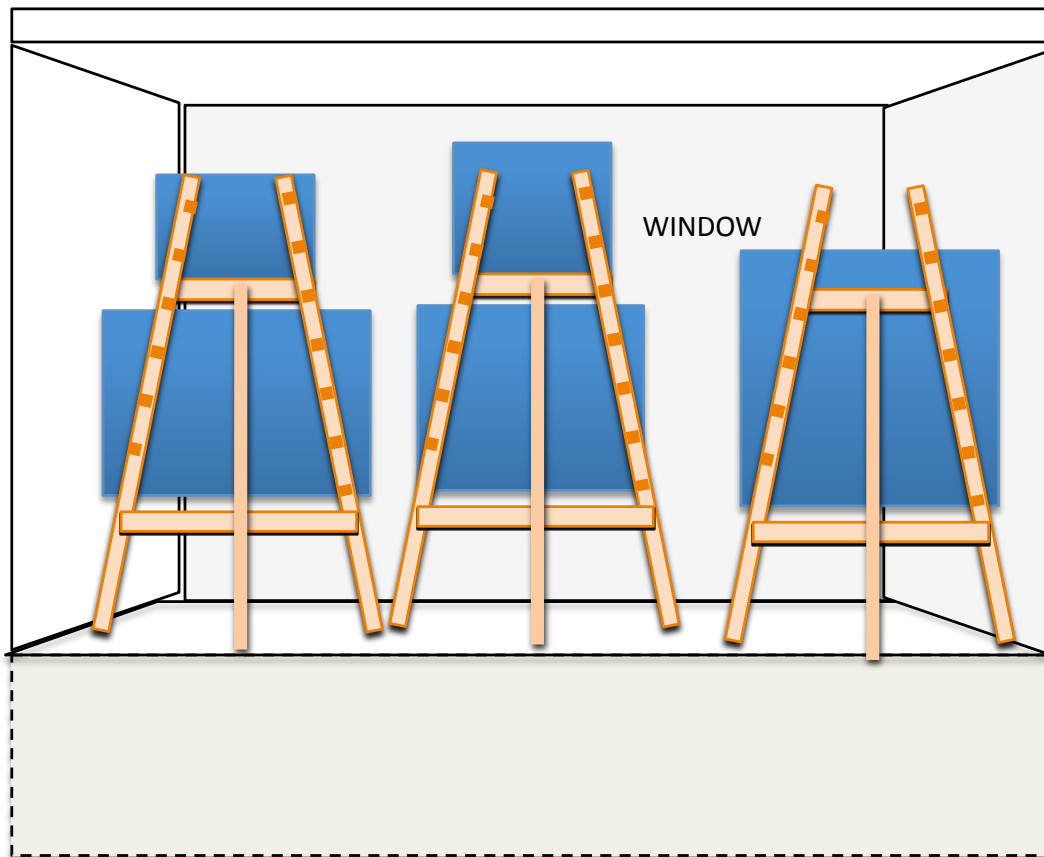
19 – 20 Upper High St,  
Cradley Heath  
B64 5HX





## 1st Floor

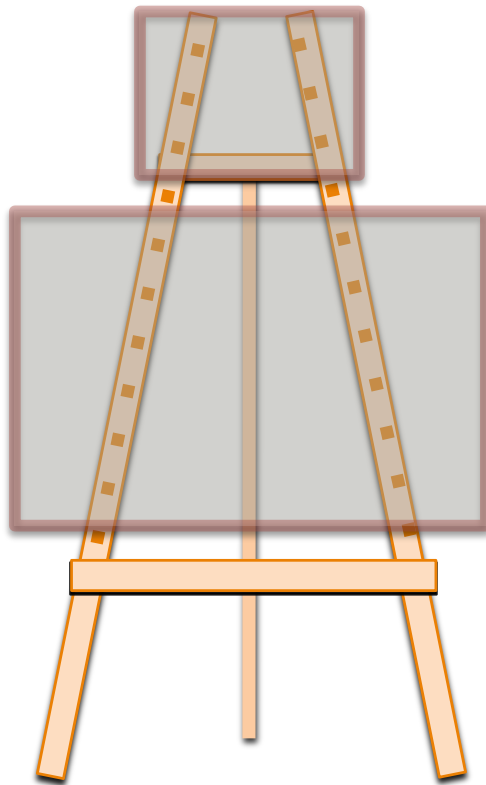
## 2x Front Window Displays Area A & Area B



2x front display windows face onto the main  
A4100, Upper High Street, Cradley Heath.

The road is a busy commuter route linking Black  
Heath to Merry Hill.

# Art Display Easel



At their discretion The Art Yard team may showcase art in any gallery using a large gallery display easel.

Artwork can be adjusted vertically and the easel can hold up to 2 art pieces.

(Please ask The Art Yard team for details)